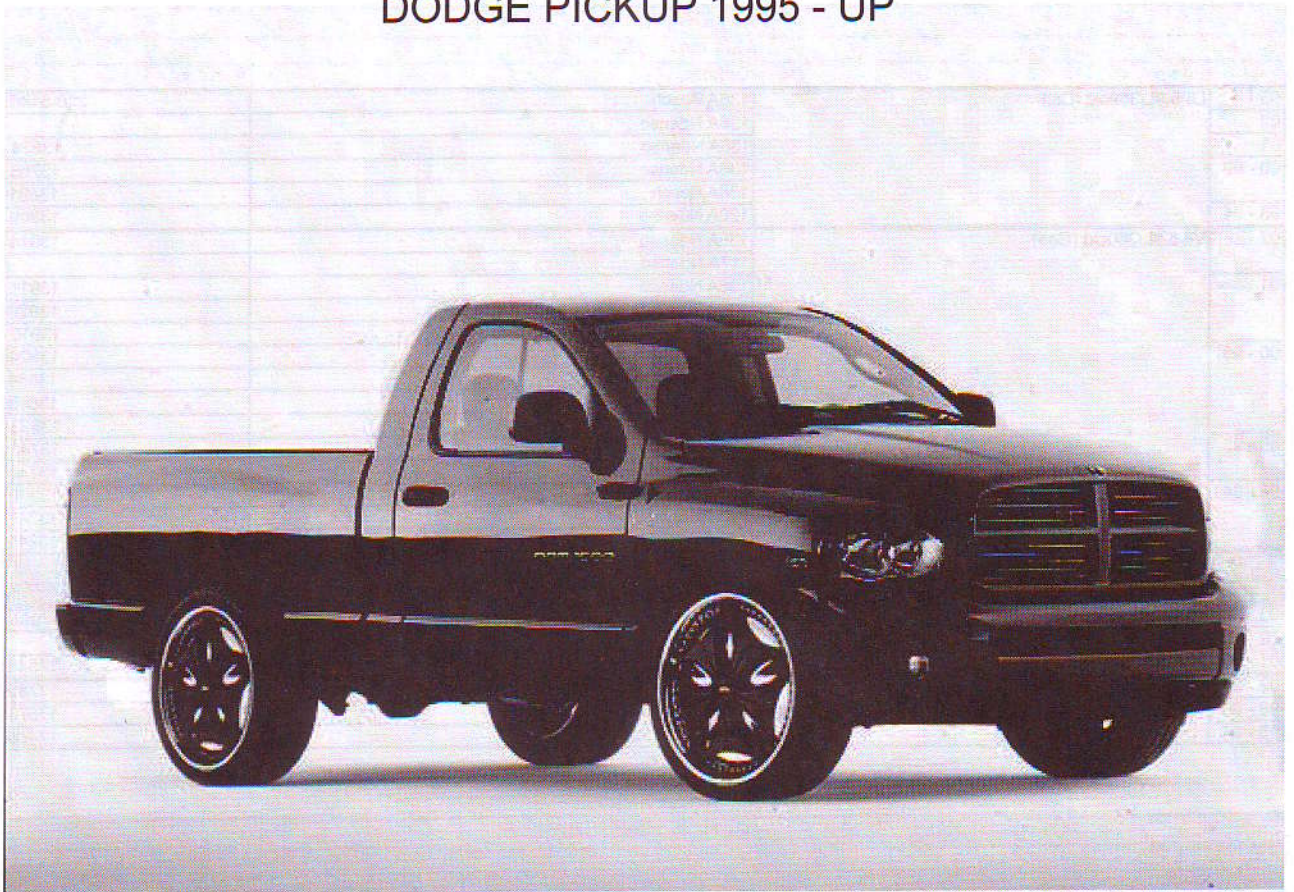


## DODGE PICKUP 1995 - UP



## INNHold:

Alternator – (Dynamo).....	side 102
Belt – (Vifterem).....	side 102
Brake Parts – (Bremsedeler).....	side 103
Filter – (Filter).....	side 105
Fuel Pump – (Bensinpumpe).....	side 105
Hub & Seal – (Hjullager & simring).....	side 106
Shocks & Struts – (Støtdempere).....	side 106
Spark Plugs – (Tennplugger).....	side 106
Starter – (Starter motor).....	side 102
Steering & Suspension – (Forstilling).....	side 107
Water Pump – (Vannpumpe).....	side 106
Wiper Blades – (Vindusviskere & spylere).....	side 109

# PART LIST FOR DODGE PICKUP

ALTERNATOR			
RAM 1500 & 2500 PICKUP			
Year	Engine	Options	Part No.
03	L6 5.9L/359cid (Dsl)	136A Bosch	220-5140
02		136A Ndenso	
01		136A Ndenso	13874
00 - 99		136A Ndenso	13766
		136A Bosch	13881
98 - 94		120A Ndenso	13309
02	V8 5.9L/360cid (Gas)	136A Ndenso	13914
01		117A Ndenso	
		136A Ndenso	13911
		136A Bosch	13920
00 - 99		117A Ndenso	13910
		136A Ndenso	13824
		136A Bosch	13854
		117A Bosch	13843
		117A Ndenso	13823
98 - 97		136A Ndenso	13742
		90A Ndenso	13245
96 - 94		120A Ndenso	13309
		90A Ndenso	13245
		75A Ndenso	13245
STARTER			
Year	Engine	Options	Part No.
03	L6 5.9L/359cid (Dsl)	Cummins Engine	190-799A
02		Cummins Engine	
01 - 94		Cummins Engine	17548
02 - 99	V8 5.9L/360cid (Gas)	Ndenso Gir Reduction	17785
98 - 96		Ndenso Gir Reduction	17573
95 - 94		Ndenso Gir Reduction	17466

BELT & TENSIONER				
RAM 1500 & 2500 PICKUP				
Year	Engine	Options	Part No.	
02	V8 5.9L/360cid (Z)	Multiple Accessory, w/AC	5070973	
		Multiple Accessory, w/o AC	5070885	
		Idler Assy. Pulley	89048	
		Tensioner Pulley	89008	
		Automatic Belt Tensioner	89215	
01	L6 5.9L/359cid (Dsl) (6, 7)	Multiple Accessory, w/AC	5080810	
		Multiple Accessory, w/o AC	5080655	
		Tensioner Pulley	89005	
	V8 5.9L/360cid (5)	Automatic Belt Tensioner	89219	
		Multiple Accessory, w/AC	5071133	
		Tensioner Pulley	89007	
	V8 5.9L/360cid (Z)	Automatic Belt Tensioner	89235	
		Multiple Accessory, w/AC	5070973	
		Multiple Accessory, w/o AC	5070885	
		Tensioner Pulley	89008	
00 - 99	L6 5.9L/359cid (Dsl) (6)	Automatic Belt Tensioner	89215	
		Multiple Accessory, w/AC	5080810	
		Multiple Accessory, w/o AC	5080655	
	V8 5.9L/360cid (5)	Tensioner Pulley	89005	
		Automatic Belt Tensioner	89219	
		Multiple Accessory, w/AC	5071133	
	V8 5.9L/360cid (Z)	Idler Pulley	89048	
		Tensioner Pulley	89007	
		Automatic Belt Tensioner	89235	
		Multiple Accessory, w/AC	5070973	
		Multiple Accessory, w/AC (Dealer Air)	5070955	
		Multiple Accessory, w/o AC	5070885	
	98 - 97	L6 5.9L/359cid (Dsl) (D)	Idler Pulley	89048
			Tensioner Pulley	89008
			Automatic Belt Tensioner	89215
V8 5.9L/360cid (5)		Multiple Accessory, w/AC	5080810	
		Multiple Accessory, w/o AC	5080655	
		Tensioner Pulley	89005	
V8 5.9L/360cid (Z)		Automatic Belt Tensioner	89219	
		Multiple Accessory, w/AC	5071133	
		Idler Pulley	89048	
	Tensioner Pulley	89007		
	Automatic Belt Tensioner	89235		
	Multiple Accessory, w/AC	5070973		
96 - 94	V8 5.9L/360cid (5)	Multiple Accessory, w/AC (Dealer Air)	5070955	
		Multiple Accessory, w/o AC	5070885	
		Idler Pulley	89048	
	V8 5.9L/360cid (Z)	Tensioner Pulley	89008	
		Automatic Belt Tensioner	89215	
		Multiple Accessory, w/AC	5070973	
		Multiple Accessory, w/AC (Dealer Air)	5070955	
95 - 94	V8 5.9L/360cid (5)	Multiple Accessory, w/o AC	5070885	
		Idler Pulley	89048	
	V8 5.9L/360cid (Z)	Tensioner Pulley	89008	
		Automatic Belt Tensioner	89215	

96 - 95	L6 5.9L/359cid (Dsl) (C)	Multiple Accessory, w/AC	5080810
		Multiple Accessory, w/o AC	5080655
		Tensioner Pulley	89005
		Automatic Belt Tensioner	89219
	V8 5.9L/360cid (5)	Multiple Accessory, w/AC	5070975
		Multiple Accessory, w/o AC	5070885
		Idler Pulley	89048
		Tensioner Pulley	89007
	V8 5.9L/360cid (Z)	Automatic Belt Tensioner	89235
		Multiple Accessory, w/AC	5070975
		Multiple Accessory, w/AC (Dealer Air)	5070955
		Multiple Accessory, w/o AC	5070885
94	L6 5.9L/359cid (Dsl) (C)	Idler Pulley	89048
		Tensioner Pulley	89005
		Automatic Belt Tensioner	89219
		Multiple Accessory, w/AC	5080810
	V8 5.9L/360cid (5)	Multiple Accessory, w/o AC	5080655
		Multiple Accessory, w/AC	5070975
		Multiple Accessory, w/o AC	5070885
		Idler Pulley	89048
	V8 5.9L/360cid (Z)	Tensioner Pulley	89007
		Automatic Belt Tensioner	89235
		Multiple Accessory, w/AC	5070975
		Multiple Accessory, w/AC (Dealer Air)	5070955
	Multiple Accessory, w/o AC	5070885	
	Idler Pulley	89048	
	Tensioner Pulley	89008	
	Automatic Belt Tensioner	89215	

### BRAKE PADS & SHOES

RAM 1500 PICKUP			
Year	Front Pads	Qualifier	Part No.
05 - 02	Brake Pads		MX966B
01 - 00	Brake Pads	4WD	MX758
99 - 95	Brake Pads		MX369
Year	Rear Pads and Shoes	Qualifier	Part No.
05 - 02	Brake Pads		MX967A
01 - 00	Brake Shoes	11 x 2-1/4" Brake	PAB734
99 - 95	Brake Shoes	11 x 2" Brake	PAB462R
Year	Parking Brake Shoes	Qualifier	Part No.
03 - 02	Brake Shoes	4WD	PAB 771

### ROTOR AND DRUM

Year	Front Rotors	Qualifier	Part No.
05 - 04	Brake Rotor	Exc. Perf. Exc. HD	BD126062
03 - 02	Brake Rotor		BD126062
01 - 00	Brake Rotor	4WD	BD125744
99 - 95	Brake Rotor	4WD	BD125388
Year	Rear Rotor and Drums	Qualifier	Part No.
01 - 00	Brake Drum	11 x 2-1/4" Brake	BD125727
99 - 95	Brake Drum	11 x 2" Brake	BD125394
05	Brake Rotor	SRT-10	BD126158
04	Brake Rotor	Exc- HD	BD126002
04	Brake Rotor	HD	BD126158
03 - 02	Brake Rotor		BD126002

### BRAKE HARDWARE

Year	Front Brake Hardware	Qualifier	Part No.
05 - 00	Caliper Bolt Pin		F126899S
99 - 95	Caliper Bolt Pin		F117224S
05 - 00	Disc Align Kit		F138118S
97 - 95	Disc Align Kit	4WD	F117225S
05 - 00	Pin Boot Kit		F139361
99 - 95	Pin Boot Kit		F130901S
Year	Rear Brake Hardware	Qualifier	Part No.
01 - 00	Adjuster Kit	LH; 11 x 2-1/4" Brake	F138096S
01 - 00	Adjuster Kit	RH; 11 x 2-1/4" Brake	F138097S
99 - 95	Adjuster Kit	LH	F98412
99 - 95	Adjuster Kit	RH	F98413
99 - 95	Adjuster Spring Kit	11 x 2-1/4" Brake	F73180S
01 - 00	Adjusting Screw Assy	LH; 11 x 2-1/4" Brake	F73151S
01 - 00	Adjusting Screw Assy	RH; 11 x 2-1/4" Brake	F73150S
99 - 95	Adjusting Screw Assy	LH	F73181S
99 - 95	Adjusting Screw Assy	RH	F73182S
01 - 00	Combi Kit	11 x 2-1/4" Brake	F13881
	- Hold Down Kit		F117126S
	- Return Spring Kit		F36466S
99 - 95	Combi Kit	11 x 2-1/4" Brake	F130896S
	- Adjusting Screw Assy		F73180S
	- Return Spring Kit		F73179S
05 - 02	Disc Align Kit		F139827
01 - 00	Hold Down Kit	11 x 2-1/4" Brake	F117126S
05 - 00	Pin Boot Kit		F139361
01 - 00	Return Spring Kit	11 x 2-1/4" Brake	F36466S
99 - 95	Return Spring Kit	11 x 2-1/4" Brake	F73179S
Year	Parking Brake	Qualifier	Part No.
04 - 02	Combi Kit		F139850

CALIPERS			
Year	Left Front, Unloaded	Qualifier	Part No.
05 - 02	Unloaded Caliper		CR134604
01 - 00	Unloaded Caliper		CR134510
99 - 95	Unloaded Caliper		CR116292
Year	Right Front, Unloaded	Qualifier	Part No.
05 - 02	Unloaded Caliper		CR134605
01 - 00	Unloaded Caliper		CR134511
99 - 95	Unloaded Caliper		CR116293
Year	Left Rear, Unloaded	Qualifier	Part No.
05 - 02	Unloaded Caliper		CR134606
Year	Right Rear, Unloaded	Qualifier	Part No.
05 - 02	Unloaded Caliper		CR134607
HYDRAULICS			
Year	Front Brake Hose	Qualifier	Part No.
03 - 02	Brake Hose	LH; w/ABS	F139938
03 - 02	Brake Hose	LH; w/RWAL	F140004
03 - 02	Brake Hose	RH; w/ABS	F139939
03 - 02	Brake Hose	RH; w/RWAL	F140005
01 - 00	Brake Hose	LH; 4WD; w/ABS	F139948
01 - 00	Brake Hose	LH; 4WD; w/RWAL	F139950
01 - 00	Brake Hose	RH; 4WD; w/ABS	F139949
01 - 00	Brake Hose	RH; 4WD; w/RWAL	F139951
99 - 95	Brake Hose	LH; 4WD; w/ABS	F132296
99 - 95	Brake Hose	RH; 4WD	F132149
Year	Rear Brake Hose	Qualifier	Part No.
01 - 98	Brake Hose	To 7/4/00; w/Rear Drum	F118546
97 - 95	Brake Hose		F120520
Year	Wheel Cylinder	Qualifier	Part No.
02 - 00	Wheel Cylinder	LH; 1" Bore	F78974
02 - 00	Wheel Cylinder	RH; 1" Bore	F78975
99 - 95	Wheel Cylinder	15/16" Bore	F131225
BRAKE PADS & SHOES			
Year	Front Pads	Qualifier	Part No.
05 - 03	Brake Pads		MX965
02 - 01	Brake Pads		MX859
00	Brake Pads		MX821
99	Brake Pads	4WD; Exc. 7500 GVW	MX459A
99	Brake Pads	7500 GVW	MX845
98 - 95	Brake Pads	4WD; Exc. 7500 GVW	MX459
98 - 95	Brake Pads	7500 GVW	MX370
Year	Rear Pads and Shoes	Qualifier	Part No.
05 - 01	Brake Pads		MX702A
01 - 00	Brake Shoes	12-1/8 x 3-1/2" Brake	PAB583R
99 - 95	Brake Shoes	13 x 2-1/2" Brake	PAB655R
Year	Parking Brake Shoes	Qualifier	Part No.
01 - 00	Brake Shoes		PAB771
ROTOR AND DRUM			
Year	Front Rotors	Qualifier	Part No.
05 - 03	Brake Rotor		BD126045
02 - 00	Brake Rotor		BD125745
99 - 95	Brake Rotor	4WD; Exc. 7500GVW	BD125346
98 - 95	Brake Rotor	4WD; 7500 GVW	BD61918
Year	Rear Rotor and Drums	Qualifier	Part No.
01 - 00	Brake Drum	12-1/8 x 3-1/2" Brake	BD125748
99 - 95	Brake Drum	13 x 2-1/2" Brake	BD125393
05 - 03	Brake Rotor		BD126049
02 - 01	Brake Rotor		BD125760
BRAKE HARDWARE			
Year	Front Brake Hardware	Qualifier	Part No.
05 - 00	Caliper Bolt/Pin		F126899S
99 - 95	Caliper Bolt/Pin	4500 lb Axle	F129642S
99 - 95	Caliper Bolt/Pin	4WD; 3500 lb Axle	F117224S
05 - 00	Disc Align Kit		F139812
99 - 95	Disc Align Kit	4WD; 3500 lb Axle	F117225S
05 - 00	Pin Boot Kit		F139361
99 - 95	Pin Boot Kit	3500 lb Axle	F130901S
96 - 95	Pin Boot Kit	4500 lb Axle	F126906S
Year	Rear Brake Hardware	Qualifier	Part No.
99 - 95	Adjuster Kit	LH; 13x 2-1/2" Brake	F98406
99 - 95	Adjuster Kit	RH; 13 x 2-1/2" Brake	F98407
01 - 00	Adjuster Spring Kit	12-1/8 x 3-1/2" Brake	F73105
99 - 97	Adjuster Spring Kit	13 x 2-1/2" Brake	F73145S
99 - 95	Adjusting Screw Assy	LH; 13x 2-1/2" Brake	F83294
99 - 95	Adjusting Screw Assy	RH; 13 x 2-1/2" Brake	F83295
05 - 00	Caliper Bolt/Pin		F126899S
01 - 00	Combi Kit	12-1/8 x 3-1/2" Brake	F88754
	- Adjuster Spring Kit		F73105
	- Return Spring Kit		F73207
99 - 95	Combi Kit	13 x 2-1/2" Brake	F98457S
	- Adjuster Spring Kit		F73145S
	- Hold Down Kit		F113455S
	- Return Spring Kit		F59100S
05 - 01	Disc Align Kit		F140518
99 - 97	Hold Down Kit	13 x 2-1/2" Brake	F113455S
05 - 00	Pin Boot Kit		F139361
01 - 00	Return Spring Kit	12-1/8 x 3-1/2" Brake	F73207
99 - 97	Return Spring Kit	13 x 2-1/2" Brake	F59100S
Year	Parking Brake	Qualifier	Part No.
04 - 01	Combi Kit		F139725